

RESILIENCE IN WILDLIFE COMMUNITIES FOR THE SOCIAL AND GREEN ECONOMY

The Programme seeks to support emerging enterprises within the Greater Kruger National Park Landscape (Limpopo and Mpumalanga Provinces)

The Resilience in Wildlife Communities for the Social and Green Economy Programme will support enterprises to understand and implement strategies for business sustainability and resilience which will assist enterprises to develop a framework to harness the opportunities presented by alternative value chains for inclusive and sustainable growth within the Greater Kruger Landscape and broader rural economies within the Limpopo and Mpumalanga Provinces.

ENTERPRISE SELECTION CRITERIA

Do you have an enterprise that represents the below result areas:



Waste Management

- Reduce waste generation through prevention, reduction, recycling and reuse.



Ecosystems and Natural Resource Management

- Protecting and restoring biodiversity and creating new natural habitats
- Conservation, wildlife economies, management of fauna and flora, ecosystems and restoration of degraded ecosystems.



Economies and Livelihoods (Compulsory Cross-cutting Theme)

- Create social and green opportunities for your local community.
- Business model can be replicated

10 ENTERPRISES WILL RECEIVE:



5 DAY STARTER WORKSHOP (FIRST WORKSHOP: 22-24 FEBRUARY)



3 MONTHS ENTERPRISE DEVELOPMENT SUPPORT AND MENTORSHIP



R15 000 FINANCIAL SUPPORT

About the Resilience in Wildlife Communities for the Social and Green Economy Programme

Indalo Inclusive partnered with the United Nations Environment Programme to implement an integrated training programme that is aimed at promoting principles of inclusive growth and sustainable development for the social and green economy in South Africa.

The programme is aimed for entrepreneurs operating on the periphery of wildlife conservation areas in order for them to tap into the mainstream of green markets as well as expand their services for broader and alternative value chains.

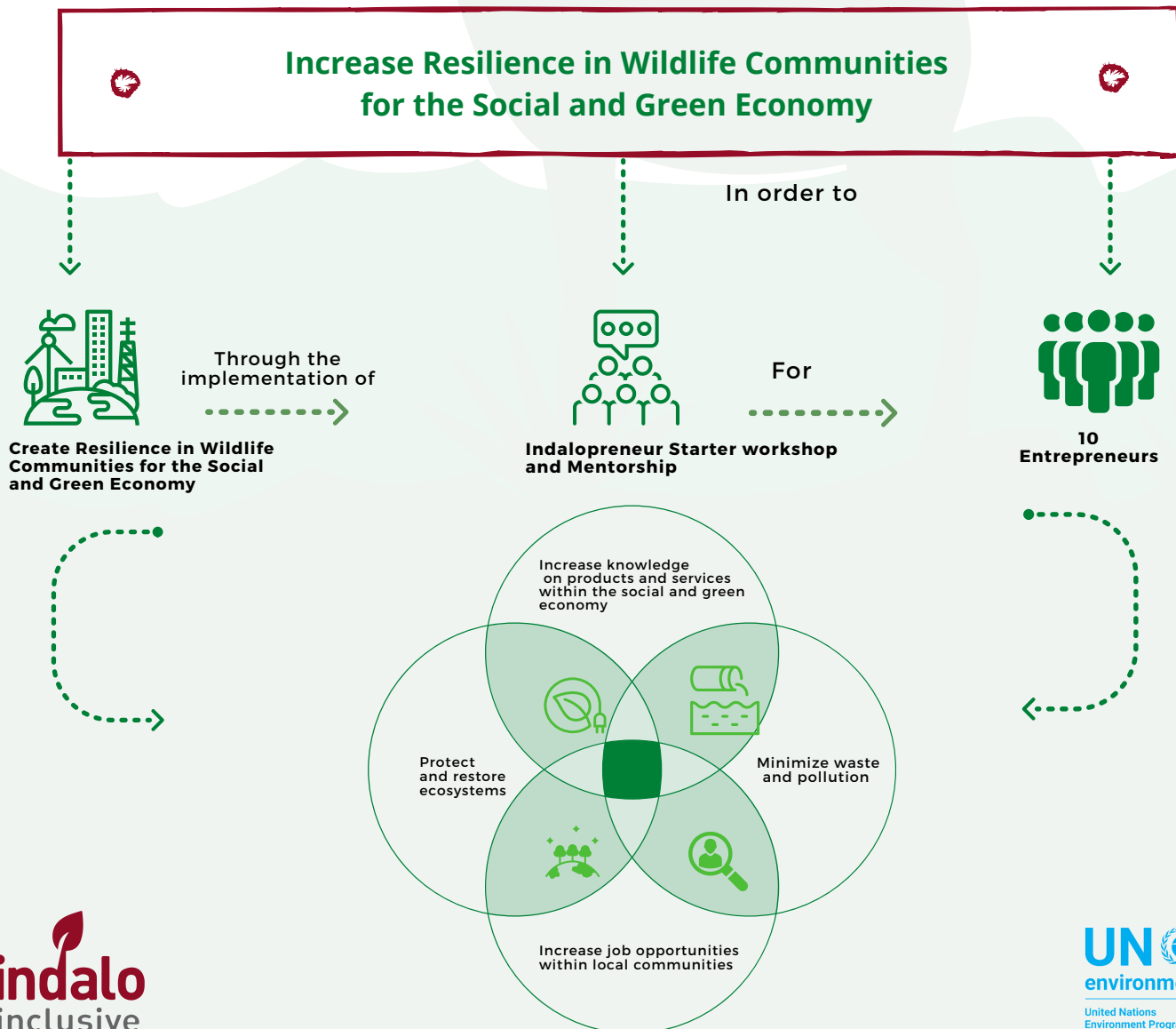
Objectives of the Programme

- Provide targeted financial support to emerging entrepreneurs within the Kruger National Park value chain to promote the social and Green Economy.
- Empowering youth and women- led SMME's
- Improving access of information to small enterprises
- Provide industry-based programmes to support small enterprises

Theory of change & project components



Facilitated by Indalo Inclusive



Strategic adaptive linkages to the Greater Kruger Development Programme

The Greater Kruger Strategic Development Program (GKSDP), is an integrated partnership programme seeking to unlock significant inclusive rural economic development. The proposed intervention is aligned to Strategic Objective 2 (SO2) of the GKSDP which seeks to Increasing employment and sustaining livelihoods and addresses the problem of Poverty, unemployment, inequality, lack of skills and opportunities, uneven development across the landscape. Limited fair access and participation of stakeholders in the rural economy. Unaligned socio-economic development initiatives.

Recognizing the challenge of tourism economic activities reduction as a result of COVID-19, entrepreneurs require additional support to explore other alternative and inclusive business and revenue generation opportunities outside of the main tourism economy. The proposed intervention will therefore seek to assist entrepreneurs to create viable and sustainable alternative livelihoods and revenue generation options and strategies that are linked with the GKSDP under the scope of:

- Assisting entrepreneurs to find solutions to the barriers that negatively impact their enterprises and limiting alternative revenue generation and posing a threat to the sustainability of their companies in the context and in line with the Greater Kruger socio-economic and conservation outcomes
- Identifying strategic partnerships and engagement platforms
- Identifying conservation compatible land use and sector options within each selected area
- better informing how projects, resourcing and funding models in different geographical areas could be aligned
- aligning and strengthen knowledge base systems and capacity development processes

The programme will link with the following strategic objectives of the Greater Kruger Development Programme under the CBD Post 2020 Global Biodiversity Framework:

1. Securing the Natural Capital Base of the Greater Kruger Landscape - Enterprise development for the protection of priority ecosystems integrated catchment management.
2. Increasing employment and sustaining livelihoods - Enterprise development for Biodiversity economy and conservation compatible agriculture, Waste management economy,
3. Responsible tourism SMME and supply chain linkages.
4. Mobilise Resources and Optimise investment - Funding SMME programmes for Greater Kruger area network.

Eligibility Criteria



Inclusion & Social Impact

- Does the enterprise offer realistic economic development ?
- Does the enterprise guarantee social protection, human rights and inclusion on the base of local communities and their value chain?



Ability to scale and replicate

- Can future growth continue to sustainable development locally or at National or Regional level?
- Can the enterprise model be adapted and easily implemented elsewhere?



Innovation and Technology

- Is the model using existing technology in a new market?
- Does the Business demonstrate good potential for technological adjustment and use of lessons from other regions and work processes?



Team Compassion and Partnerships

- Does the team have prior business experience?
- Does the team skills compliment each other and is it beneficial for the business?
- Does the enterprise have good value add partners?



Green and Climate Impact

- Is the climate impact significant within the Greater Kruger communities and value chains of Mpumalanga and Limpopo regions?



Gender Equality & Youth Empowerment

- Does the enterprise prioritize women and youth?
- Does the business ownership comprise of youth and women?



Job Creation Potential

- Does the enterprise have potential growth to maintain existing jobs and create new ones ?
- Is the business able to provide upskilling opportunities for current employers and leading decent work?



Business Operation

- Does the enterprise solve a real livelihood problem?
- Is there a clearly identified client/supplier segment?
- Is there an opportunity to expand into other markets ?



Governance and Sustainable Development Goals

- Does the enterprise promote the SDG's and illustrate how they are linking the goals into their business practices?
- Must have good Governance and policies in place

Application Process

You can apply online by clicking the button below.



<https://indaloelearning.org.za/>

Please make sure to submit your application before the 11th of February 2021. Submissions will be accepted until **11th of February 2021, 23h59**. Late submissions will not be considered.

Disclaimer



This document was produced with the financial support of the United Nations Environment Programme for the use of the Resilience in Wildlife Communities for the Social and Green Economy Programme. The contents of this publication are the sole responsibility of Indalo Inclusive South Africa and do not necessarily reflect the views of the funders.

Contact Details



Info@indaloinclusive.org.za



+27 (012) 012 844 0135



www.indaloinclusive.org.za

Turning eco-inclusive business ideas
into **POSITIVE** impact